

MINUTES

Meeting: AMESBURY AREA BOARD
Place: Antrobus House, 39 Salisbury Road, Amesbury SP4 7HH
Date: 17 November 2016
Start Time: 7.00 pm
Finish Time: 9.09 pm

Please direct any enquiries on these minutes to:

Jessica Croman Democratic Services Officer, Tel: 01225 718262 or (e-mail) jessica.croman@wiltshire.gov.uk

Papers available on the Council's website at www.wiltshire.gov.uk

In Attendance:

Wiltshire Councillors

Cllr Ian West (Chairman), Cllr Graham Wright (Vice Chairman), Cllr Mike Hewitt, Cllr John Smale, Cllr Fred Westmoreland and Cllr Jamie Capp

Wiltshire Council Officers

Lisa Moore, Democratic Services Officer

Town and Parish Councils

Amesbury Town Council – Cllr J Swindlehurst & Cllr R Yuke

Durrington Town Council – Cllr D Healing & Cllr M Wardell

Figheidean Parish Council – Cllr J Menzies

Shrewton Parish Council – Cllr R Harris, Cllr D Henry & Cllr C Slater

Steeple Langford Parish Council – Cllr J Broad

Winterbourne Parish Council – Cllr D Baker

Partners

Police – Inspector Brain

Fire and Rescue Service – Stacey Brindley & Chris Browning

Total in attendance: 29

<u>Agenda Item No.</u>	<u>Summary of Issues Discussed and Decision</u>
177	<p><u>Welcome and Introductions</u></p> <p>The Chairman welcomed everyone to the meeting of the Amesbury Area Board and thanked the Antrobus House for hosting the meeting.</p> <p>At the Chairman's invitation, the Councillors and officers introduced themselves.</p>
178	<p><u>Apologies for Absence</u></p> <p>Apologies for absence had been received from:</p> <ul style="list-style-type: none"> • Dave Roberts – Community Engagement Manager • Jess Croman – Democratic Services Officer • Cllr Lovelock – Shrewton PC
179	<p><u>Minutes</u></p> <p><u>Decision</u> The minutes of the meeting held on Thursday 29 September 2016, were agreed as a correct record and signed by the Chairman.</p>
180	<p><u>Declarations of Interest</u></p> <p>There were no declarations of interest.</p>
181	<p><u>Chairman's Announcements</u></p> <p>The Chairman made the following announcements:</p> <ul style="list-style-type: none"> • Amesbury Methodist Church had held an afternoon of celebrations for its 200th anniversary. • On the 7 Oct the Chairman had attended the launch of the Human Henge which was a project at Stonehenge, to engage disadvantaged people living in Wiltshire in a therapeutic sensory experience of the World Heritage Site. The restoration trust had received £53,400 from the Heritage Lottery Fund, an Area Board award of £2,224 and £3,000 from English Heritage. • He gave congratulations to Jan Tidd and Farley Maloney who had just received charity status.

	<ul style="list-style-type: none"> • Discussions had been held with MP John Glenn and members of Highways England to discuss the A303, proposals for works were hoped to come through early next year. • Wonderful Things – Finds from the Army Basing Programme: Posters detailing an invitation to a presentation by archaeologists leading the excavations at Tidworth, Bulford and Larkhill had been circulated. This would be held at Tidworth Garrison Theatre, on Thursday 8 December, at 6.30pm.
182	<p><u>Updates from Partners and Town/Parish Councils</u></p> <p>The Chairman referred to the updates set out in the agenda and invited further updates from Town/Parish Councils and other Partners, including outside bodies. It was noted that the preferred option was for written updates, to minimise time spent during the meeting.</p> <p><u>Police</u></p> <p>The new Community Policing model which began just over four weeks ago was still in the early stages but was working well. Any early concerns had not come to fruition. Local priorities were being addressed, and teams were working well now, effectively as a bigger community policing team.</p> <p>The Police would like to see everyone signed up to Community messaging as it was felt that it was a really useful interactive tool which could be directed to cover specific groups or types of information.</p> <p>To find out more follow the link: https://www.wiltsmessaging.co.uk/</p> <p><u>Questions and comments were then taken, these included:</u></p> <ul style="list-style-type: none"> • On bonfire night, cones were put out along the road to prevent people from parking their cars whilst at the event, however this did not prevent them and an obstruction was caused, which meant the fire engine could not get through. When people complained to school they were unable to control the situation. No one wanted to know. <u>Answer:</u> This could have been a planning issue. • On Halloween night in Durrington 120 people attended the event, the Police were there to assist with the traffic, this had worked really well. • Was there an update on the recent spate of catapult damage to car windows? <u>Answer:</u> This was being looked at daily. • The speeding traffic on the A36 bypass at Deptford appeared to be getting worse. <p><u>Shrewton Parish Council – Chairman Richard Harris</u></p> <p>The Parish had recently purchased a couple of Speed Indicator Devices which</p>

	<p>had been recording data on the London Road.</p> <p>In the twelve days that these devices were present over 53,600 vehicles passed along London Road. Around 40% of vehicles were travelling in excess of the 30 MPH speed limit with some vehicles in excess of 55 MPH. The maximum speed recorded was in excess of 75 MPH for a vehicle coming in to Shrewton on 21 October.</p> <p>Work was still awaited following a traffic incident last January where a van went through the railings along the high street. It was thought that this would have been a straight forward repair, paid for by an insurance claim.</p> <p>The repair to a barrier which was broken in July was also still awaited. The Parish asked for an update on these works. <u>Answer</u>: The Board Chairman would work with the Parish to move these issues forward.</p> <p><u>Durrington Parish Council</u> As the Blues disco had been so popular the previous time, young people had to be turned away. This time 200 tickets would be produced and issued to children. The next Disco would be held on 5 December.</p> <p><u>Steeple Langford Parish Council</u> Work had been carried out in the autumn to clear ledges and verges. The Parish asked for clear lines of communication on the differences between highways and byways and who was the best contact for these.</p> <p>When rubbish was collected from the verges, there was no way that a Parish Council could get rid of this rubbish, as it could not be taken to the dump as it was not one's own rubbish, and the Parish was not able to buy a license, so clear direction was required on what to do with it? <u>Answer</u>: Feedback would be sought and provided.</p>
183	<p><u>Army Re-basin in Larkhill</u></p> <p>Deputy Garrison Commander Dave Penniall gave an update to the Board, the main points included:</p> <p>The three regiments at Larkhill would go up to 7 by 2020. The real-estate would not get any bigger, as the new homes would be built within the fenced areas, with an additional 440 new homes within the camp near the driving range.</p> <p>A large area near to the top would be redeveloped with technical equipment going in there.</p> <p>There would be a new gate and VCP at bottom near the Packway, where the Police building was at present.</p> <p>Some of the achievements included a new cycle way along the Packway, a new</p>

	<p>school with 60 extra places, a Doctors and a chemist.</p> <p>Working with Cllr Wright on the Community Partnership.</p> <p>There had been changes at the Stonehenge roundabout where children could now cross for the school.</p> <p>A lot more job opportunities would be created and there was also the possibility of a Tesco or small shop on the site.</p> <p>There had been a recent event on 5 November in Durrington, aimed at driving people together on a community project with the local garrison.</p> <p><u>Comments and questions were then received, which included:</u></p> <ul style="list-style-type: none"> • Could a copy of the map be put online? <u>Answer</u> – As it was an ever-changing plan it was so difficult to publish it. • Was the pharmacy for civilian use as well? <u>Answer:</u> There was a new civilian pharmacy and doctors at Larkhill. • Shrewton were experiencing issues with high numbers of army vehicles going through the High street. <u>Answer:</u> The problem was that these vehicles were outside units coming to train here, we are trying to drive this down with HQ. • The same issue was found in Bulford, Cllr Smale was due to meet with the Garrison Commander to address the matter.
184	<p><u>Splash</u></p> <p>Ben from Splash gave an update and thanked the Board for the Grant received. <u>The main point were:</u></p> <ul style="list-style-type: none"> • Splash formed part of Youth Action Wiltshire which was the youth arm of Community First. • It provided free, positive activities during school holidays for young people aged 9-16 who were facing a challenge. • Engaging with young people to increase their confidence, self-esteem and social skills, to challenge and empower them. • Providing a positive, safe environment where young people were able to flourish. • 31 young people had engaged in the first 6 months of the partnership agreement. • Returns from the bi-annual Parent/Referrer survey in September 2016 recorded these increases; 89% in Self-esteem, 91% in Self-confidence, 79% in Social skills. • Working closely with WWT, to facilitate many of their days out for them.

	<p>With the wild activities being very popular.</p> <p><u>Future activities and work:</u></p> <ul style="list-style-type: none"> ▶ Skate N Scoot in Bulford in October 16 ▶ Wet N Wild in Salisbury in October 16 ▶ Fun Animation in February 17 – Venue tbc ▶ Full end of term report to be issued March 2017. ▶ External funders to be sought to continue to provide a varied programme of positive activities for local young people. <p><u>Comments and Questions were then received, these included:</u></p> <ul style="list-style-type: none"> • The rural areas outside of Durrington and Amesbury also had lots of young people, they had not seen you, it would be good if you could go out to the rural parishes to get the word out. <u>Answer:</u> Ben would be happy to come over and present the information to them. There are also daytime activities during the school holidays.
185	<p><u>Highways</u></p> <p>The Board received a presentation from Parvis Khansari - Associate Director for Highways and Transport, and Adrian Hampton - Head of Local Highways, Weather, Emergency Services and Streetscene – South.</p> <p>A copy of the presentation slides are attached to these minutes as requested.</p> <p><u>The main points included:</u></p> <ul style="list-style-type: none"> • Information of the process of how we make decisions about which road to maintain, how we prioritise the more minor roads, and how we prioritise our services. • The Council had underinvested on roads over the past decades and now had a backlog of maintenance. • Wiltshire Council (WC) was responsible for looking after approximately 4500km of roads. To look after this network we have to decide and prioritise how best to look after it and maintain it. We have to have a system to prioritise the work. Information was collected by several methods, there was a survey vehicle which drives all the roads yearly, sending live data to HQ and another vehicle which dragged a wheel along the road to measure friction. A team of people analyse this data, in addition to information coming in from the public and other sources. • It was a statutory duty for us to make sure the road is safe, the data tells us which areas the safety features were failing in. • A list of priorities was sent to the local members for input and following and slight changes it then goes to Area Board for adoption.

- Up to 2013 we did not engage local members, as there was not enough funding to make it worthwhile. Then Cabinet gave up additional funding so we started consulting Area Boards on the list of works.
- The large maintenance jobs over the last 3 years, including skid resistant treatments, resurfacing, surface dressing and hand machine dressing were shown on slides.

Comments and Questions were the received, these included:

- The resurfacing in Shrewton on the road from Rolleston crossroads all the way down the high street had not been carried out and yet appeared on the map. When we asked the Council, they said the work was never intended to be done, the surface was an issue for cyclists. Answer: The High street had not yet been done as it was not considered as a priority right now. There was a programme for looking at safety issues like that for cyclists; however that area had been classified as safe. If there were more than 3 fatalities in 3 years then it becomes a priority for us. We have 80 of those sites at present, so we must be realistic about what we can achieve.
- On the approach to Amesbury off the 303, the surface was appalling there. It had been patched up but the skid resistance there was bad. The road can be dropping apart but the skid resistance is ok, how do you bring the two factors together? Answer: There were exceptions to everything we do. Our roads were full of utilities; they come and dig things up regularly. They have a 2 year embargo where they are not allowed to did up unless there is an emergency.
- As a unitary Councillor we need to give answers to the community. We have no idea when the teams are coming to do the roads, could you provide us with the data in advance? Answer: The roads under the red line on the graph (in the presentation) should be done. We have been coming to the Area Board for 4 years, there was a list of proposed works which was approved by the Board early this year. This list could be re-circulated.

Action: A copy of the list of roads completed and planned for done for 2016/17, is attached to these minutes.

- Are you happy with the contractors you use? Answer: We use Tarmac at the moment as our main contractor. Up to a year ago they were sub contracted to Balfour Beatty, however, that didn't work. We asked them to step aside and let us deal with Tarmac directly. Since then, in four months this year we were able to deliver almost all of the works.

Adrian Hampton explained that:

- There were 3 new contractors delivering our services for the discretionary

works, reactive works and top up options.

- The Parish steward scheme was prioritised by parish councils, with their priorities being set by them.
- The way in which sweeping was carried out had changed this month, and now there would be a schedule. All roads swept once a year, residential twice a year and other bigger roads weekly. Works would be driven by the My Wiltshire app, so we could now ensure that our resources were directed to the dirty streets.
- Ringway would visit 59,000 gullies. If a gully does not need emptying then they will leave them, to maximise the use of the gully tanks.
- Rural verges would be cut once per year. If however on junctions we require additional cutting the tractors would undertake this. Information on the land which was maintained is available online by following the link: <http://www.realitygeo.com/explorer.aspx?cfg=wiltsgf>
- All works for the Masonry and Pot Hole gangs would be prioritised according to the Council's highway inspection manual. Only requests meeting the inspection manual criteria would be undertaken. All works must be reported through the My Wiltshire system.
- All works reported would be inspected against the inspection manual to ensure only appropriate works were undertaken.
- There were six tractors available for the whole county, which would be scheduled by Ringway. Work priorities would be identified by the Highway office.
- All works for the Litter gangs would be prioritised according to the statutory Code of Practice for Litter and Refuse. Only requests meeting the criteria would be undertaken.
- Lines and signs – there was a tiny budget so these had to prioritise them.

Comments and questions were then taken, these included:

- The Resurfacing at Droveaway had not been done, as it had been dropped off the list for this year. Answer: This would be given priority for next year, but the lists had not been produced yet.
- With regards to speed signs, everything was supported by the My Wiltshire system. If they were 30/40mph signs they would be replaced, but if other signage then it would not be replaced. That was the difference between statutory and discretionary signage.

	<ul style="list-style-type: none"> • Was there a way for parishes to find out what the reference numbers refer to? <u>Answer</u>: Sadly not at the moment. It would happen when the My Wiltshire system expired next year, it would be re-contracted, so at the moment we will not be directing lots of funds in to expanding this system. • A345 from Durrington to Figcheldean there were no white lines on the road there, they should be there, it was a dangerous road. Are they coming? <u>Answer</u>: lines and signs would be inspected by Adrian's team, it was done by the inspection manual. <p>Action: Adrian would get the road looked at</p> <ul style="list-style-type: none"> • There was a claim against the Council following damaged caused by a pothole, which was then repaired, but the pothole next to it was not, surely its a false economy to fill one and not the other? <u>Answer</u>: Anything that comes through from now, a technically qualified person would go out and inspect the situation. They will assess if all the potholes in that area are of a satisfactory filled level. We have duties in relation to making sure the road is safe. However it is realised that it is impossible to fix things as soon as they appear, if we do not know about them then we cannot fix them. We need them to be reported and we need time. • What was happening with the replacement of the damaged barriers in Shrewton? <u>Answer</u>: Whilst the insurance details had been provided, the driver had not accepted the fault. • For the incident in Cholderton, no claim was possible, therefore at this moment in time there was no plan to carry out works to repair there. • Is the Council not responsible for ensuring the safety of drivers on a road alongside a stream? <u>Answer</u>: Those barriers were not restraint barriers if there was a drop of 6m or more or flood area, then this would meet the criteria. This was not the case for the road here, so there was not a safety issue.
186	<p><u>Local Youth Network Update and Youth Activities Grant Applications</u></p> <p>Lead Councillor; Cllr Jamie Capp gave an update. A special meeting of the LYN had been scheduled for Wednesday 30 November, from 5pm in the Hands in Durrington, this would focus on future priorities.</p> <p>The Board then considered two recommendations for funding from the LYN as detailed in the agenda.</p> <p><u>Decision</u></p>

	<p>The Amesbury Area Board approved the recommendation of the LYN and awarded the Bridging project - £ 13,030 towards their project, with one condition:</p> <p>1. That if they did not find a suitable location in 6 months time then the money would be returned to the Board.</p> <p><u>Decision</u> The Amesbury Area Board approved the recommendation of the LYN and awarded the Army Welfare Service £3,993.</p>
187	<p><u>Update from the Community Area Transport Group (CATG)</u></p> <p>The Chairman noted the top five priority schemes as discussed at the last CATG meeting, and gave an update on other schemes, which included the following main points:</p> <ul style="list-style-type: none"> • 4a Amesbury Town Centre Amendments to waiting restrictions around Town Centre - Work was now complete. London Road, Shrewton would now move into the top 5 priority. • 4b Orcheston C291 -30mph implementation. The work order had been raised and was now with the contractor for programming. • 4c Shrewton -Review of the current weight limit. A works order had been raised, given the size of the signs it was likely to be the end of January 2017 before the scheme was installed on site. • 4d Winterbourne Earls - Closure of Ford A TRO was currently being advertised. • 4e Great Wishford -20mph No objections had been received and therefore the works order would be raised and passed to the contractor. <p><u>Other Priority Schemes</u></p> <ul style="list-style-type: none"> • 5a High Street /A360 Shrewton - Various lining works Waiting contact from Parish Council for details. • 5(b)London Road Shrewton - Request for build outs. At the meeting in October it had been agreed to move this item into the top 5 priority, once the rest of the top 5 complete design work could commence.

	<ul style="list-style-type: none"> • 5(e) Winterbourne Stoke Church Street - waiting restrictions No response from Parish Council confirming scheme. Durrington T C Double yellow lines. No contact from Town Council. • 5(f) Old Road Cholderton SP4 0EQ street light light/illuminated bollard Work was currently taking place. • 5(g) Amesbury High /Salisbury Street Amesbury - Reduction on street parking to 30 minutes from one hour The Town Council wished to proceed therefore this could progress once prioritised by CATG. • 5 (h) Amesbury Town Centre - 20mph and weight limit. There had been no contact from the Town Council regarding 20mph. A request for the weight limit to be submitted to Transport Planning Team for consideration. • 5(i) High Post Netton - Junction markings and give way signing. Scheme plans had been submitted to Parish Council for consideration. <p>Date of Next Meeting Monday 16th January 2017 at 10am in the Redwoth Centre, Amesbury Leisure Centre.</p>
188	<p><u>Community Area Grants</u></p> <p>At the Chairman’s invitation, Councillor Fred Westmoreland, Lead member for Grants, introduced this item and took the Board through the grants for consideration, as detailed in the agenda.</p> <p><u>Decision</u> The application from Brambles preschool was deferred as no one was in attendance to speak on the project.</p> <p><u>Decision</u> Amesbury Juniors Football Club was awarded £3,025 towards the purchase of 3 sets of goalposts with the condition:</p> <ol style="list-style-type: none"> 1. That if Figheldean Parish Council were able to donate a set of goal posts which met the requirements of the club, then some funding would be returned. <p><u>Reason</u> - The application met the Community Area Grants Criteria 2016/17.</p>

	<p><u>Decision</u> Friends of Maddington Church Room was awarded £1,809 towards their project. <u>Reason</u> - <i>The application met the Community Area Grants Criteria 2016/17.</i></p> <p><u>Decision</u> Wiltshire Wildlife Hospital was awarded £898.99 towards the purchase of a washing machine and dryer. <u>Reason</u> - <i>The application met the Community Area Grants Criteria 2016/17.</i></p> <p><u>Decision</u> Great Bustard Group was awarded £850 towards the Great Bustard Observation Hide. <u>Reason</u> - <i>The application met the Community Area Grants Criteria 2016/17.</i></p> <p><u>Councillor Led Initiative</u> The Board considered an Initiative put forward by Cllr Westmoreland for the Amesbury Library courtyard restoration project, as detailed in the agenda pack.</p> <p><u>Decision</u> The Amesbury Area Board allocated up to £1,000 of funding to the Councillor Led Initiative – Amesbury Library courtyard restoration project.</p> <p><u>Wiltshire Wildlife Trust Update</u> The Board received an update from Phoebe, from the WWT water Team, detailing works carried out after receiving a grant from the Board earlier in the year.</p>
189	<p><u>Health & Wellbeing Group</u></p> <p>Lead Member; Cllr Graham Wright gave an update on the recent work of the Group, the main points included:</p> <ul style="list-style-type: none"> • On 7 November the HWB Group visited Tesco in Amesbury to promote their work, along with the Older peoples champions, the Police and Age UK all taking part in the event. Thanks were given for Tesco’s hospitality that day. • Additional Volunteers had been found as a result of the event. A second day was planned for 5 December 2016, from 11 – 2pm inside, where people would be dressed in festive outfits, hoping to promote the Health and Wellbeing theme. • A future event would be bolted on to Durrington Pool. • The next HWB meeting would be held in February.

190	<p><u>Older Peoples Champion</u></p> <p>The Older People's Champion, Jan noted that the H&WB initiative had been very well received. She felt that it was good for people to see the Area Board doing things out in the community.</p> <p>Lots of people came through who were not aware of the work going on in the community, so they had been able to promote it. Jan was looking forward to returning to Tesco in December for the second event, adding that the more times people see the volunteers at places like Tesco, holding these events, the more like people were to come and speak to us.</p> <p>The need for help in the community was increasing; the reduction in services for the elderly was being felt. The care system was struggling under the current weight of the need for care.</p> <p>Jan had recently undertaken safeguarding training for older people's champions. She was now out and about in the community and urged people to let her know if there was anything specific for her to feed back on.</p> <p>Cllr Hewitt added that more focus on seeing what could be done to improve the speed which patients were discharged from Hospital, back in to the community was needed.</p>
191	<p><u>Urgent items</u></p> <p>There were none.</p>
192	<p><u>Future Meeting Dates, Evaluation and Close</u></p> <p>The Chairman drew attention to the leaflets at the back of the hall, which detailed information on Extra care housing. The Older People's Champion added that the extra care housing would be one of the best things that could happen for this area. It would provide extra care in their own homes, for people who would otherwise have to go in to care.</p> <p>The representative for Healthwatch introduced herself. She would be attending future meetings.</p> <p>A Joint Strategic Assessment event was scheduled for 26 January 2017.</p> <p><u>Next Meeting:</u> It was noted that the next meeting of the Amesbury Area Board would be held on Thursday 26 January 2017.</p> <p>The Chairman thanked everyone for attending.</p>
<p><u>Attachments</u></p>	

This page is intentionally left blank

Amesbury Area Board Highway Information

Maintenance of National Roads Network

- UK has a road based economy
- Legacy of underinvestment in recent decades with £12bn backlog of maintenance
- Ranked 29th in the world for quality of roads.

Wiltshire's Highways Assets

- Roads 4,500km
- Bridges 1560
- Footways 4.3 million sq m
- Street Lights 45,000
- Traffic/Ped Signals 872
- Road Signs 50,000
- Road Gullies 83,000

Asset Value £5.2 bn



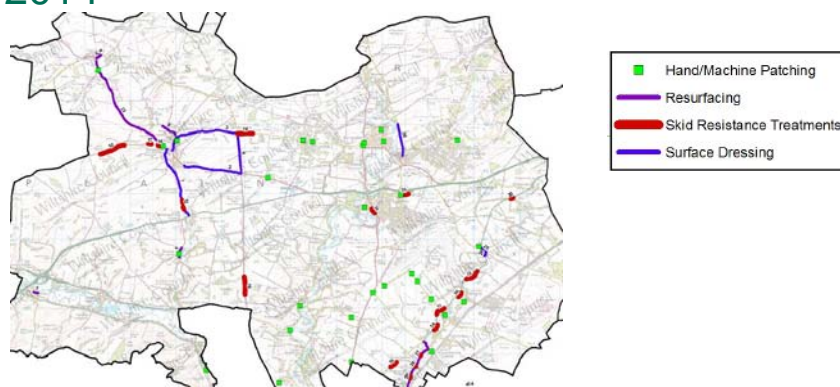
Wiltshire Council
Where everybody matters

Highway conditions and technical surveys

- Roads deteriorate in condition because of various factors, including traffic volumes, ground conditions, and weather and drainage issues
- Technical surveys of the condition of the highway network are carried out annually and the information is used to help prioritise schemes.
- The surveys include the use of a vehicle equipped with lasers and cameras to record road surface condition

Wiltshire Council
Where everybody matters

Major Maintenance Schemes and hand/machine patching sites completed since 2014

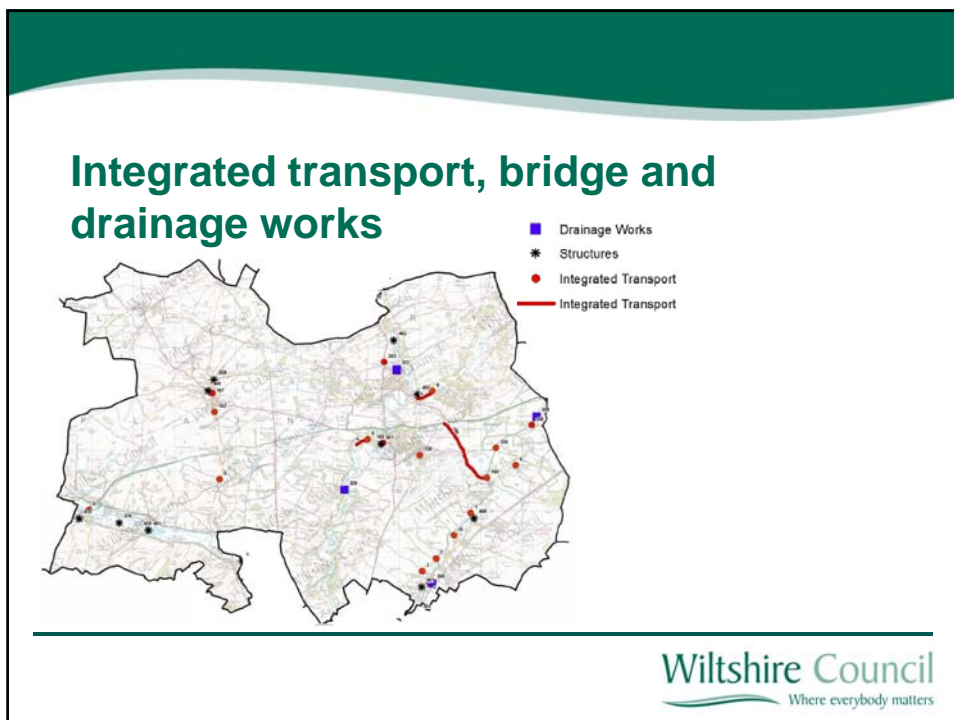
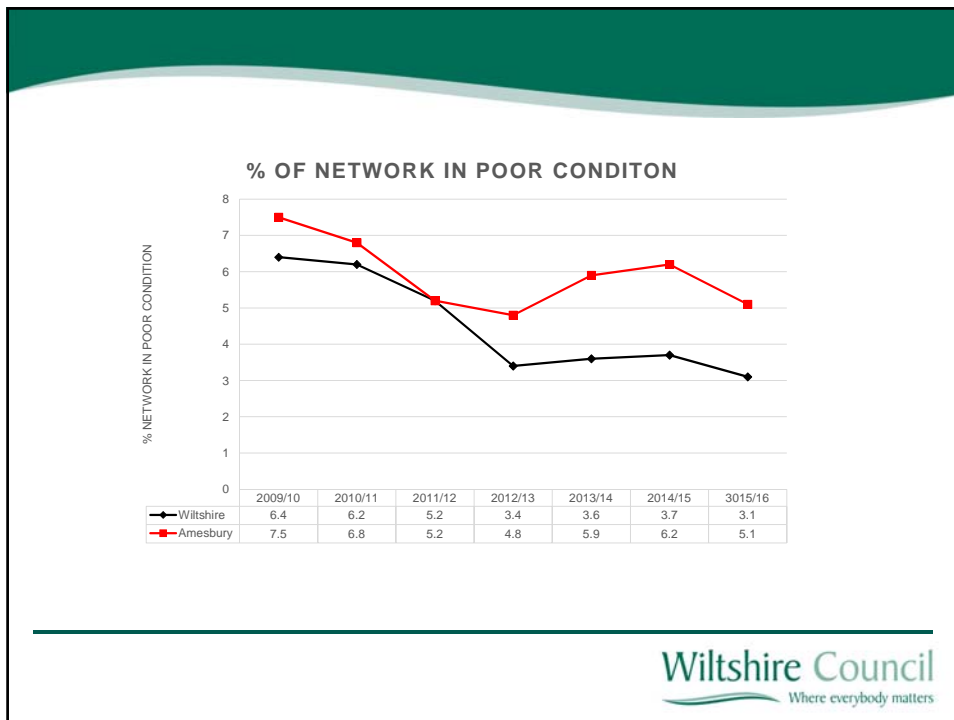


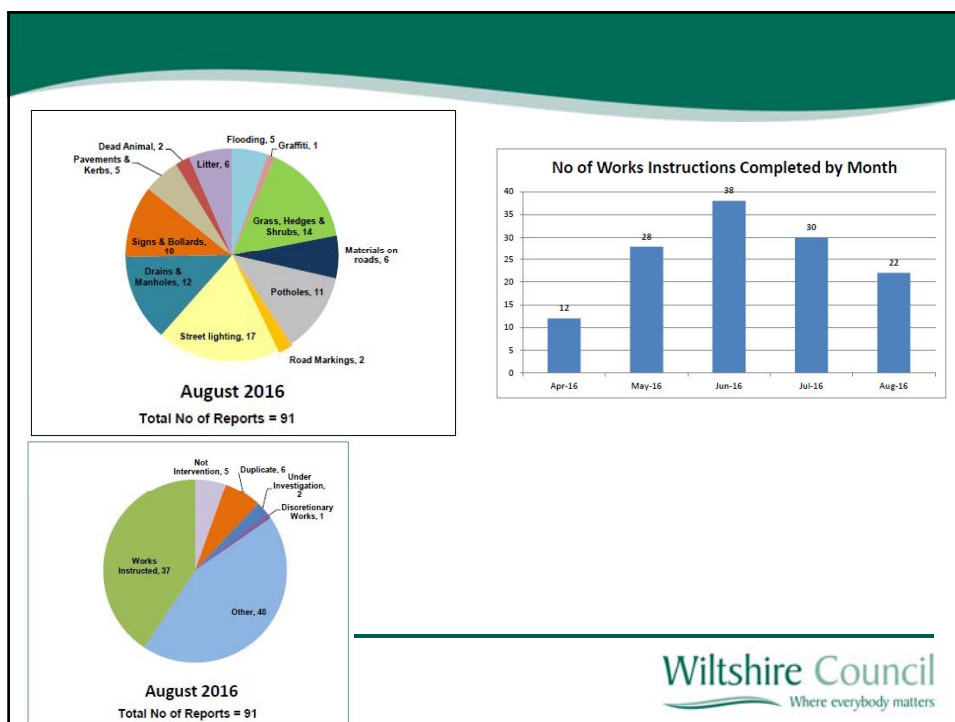
Wiltshire Council
Where everybody matters

Major Maintenance completed since 2014

Location	Works
B3083 north junction A303 into The Common to junction with Maddington Street	Surface Dressing
Amesbury Road Shrewton east to Airmans Corner	Surface Dressing
Church Street, Wylke	Resurfacing
Imber Place	Resurfacing & Skid Resistance Improvements
The Packway, Larkhill	Skid Resistance Improvements
Wyndham Lane, Allington	Surface Dressing
A338 The Winterbournes	Skid Resistance Improvements

Wiltshire Council
Where everybody matters





Wiltshire Council
Where everybody matters

Highways

2017/ 18

Local Highway

- Wiltshire Council invest £3million in Highway and Amenity Services in 2016/ 17.
- Highway and Streetscene Activities Separate responsibilities:
 - Streetcene - TLG – September 2015
 - Highway - Tarmac – September 2015
 - Highway - Ringway – April 2016



Wiltshire Council
Where everybody matters

Maintenance Issue Reporting

- Discretionary
 - Parish Steward Discretionary Service
- Reactive Works (Safety & Statutory)
 - MyWiltshire System (Web/ App or Phone)
- Top Up Options

Wiltshire Council
Where everybody matters

All discretionary work now through the Parish Steward Scheme:

- hand clearing, and cutting of growth from drainage grips and drain gully covers
- hand clearing of blocked gullies
- rodding of drainage systems
- clearing of small culverts, pipes and pits
- clearing storm debris
- trimming encroaching hedges and vegetation from around road signs and railings
- cleaning and straightening small road signs
- hand cutting small visibility areas
- removal of ragwort (hand pulling or strimming of defined areas)
- treatment/removal of weeds
- sanding and painting barriers
- graffiti and fly posting removal
- siding out of footways and carriageways



How your parish or town council can get the best out of their Steward

Priority sheets already issued.

Allows advice on local discretionary priority work to be given to given to the Parish Stewards in advance of any visit (through the Area Office)

Parish and town councils need to nominate a contact point for the Parish Steward to make contact and to discuss any works being undertaken.

To Do List

For: [Name]

Status	Priority	Due Date	Owner	Project / Task	Notes

Sweeping

- Sweeping operations are limited and must be programmed to maximise efficiencies.
- Ringway will schedule the sweeper operations.
- Work priorities are identified by the highway office.
- The council has four days a week scheduled to address local sweeper priority works. **All works must be reported through the MyWiltshire system (Wiltshire's Web Site, Wiltshire Contact Centre or Mobile App).**
- All works reported will be considered against other sweeping prioritises to ensure only appropriate works are undertaken.

Maintenance Item	Service Standard	PC Option	Estimated Cost
Road Sweeping	Amesbury Centre Once per fortnight	N/A	N/A
	Kerbed areas twice or once per year	N/A	N/A
	No other scheduled service	Go direct to Ringway	Dependant on frequency and area

Wiltshire Council
Where everybody matters

Gully Emptying

- High risk (road safety or house flooding) gullies will be emptied yearly.
- Any requests for additional gully empties will be prioritised according to their perceived risk of house flooding or road safety.
- If the highway office believe there is a low risk of house flooding or road safety the request for an additional empty will be rejected and left to when/ if resources allow.
- **All works must be reported through the MyWiltshire system (Wiltshire's Web Site, Wiltshire Contact Centre or Mobile App).**
- All works reported will be considered against other gully emptying prioritises to ensure only appropriate works

Maintenance Item	Service Standard	PC Option	Estimated Cost
Gullies	High Risk Gullies - House and Road Flooding emptied immediately if flooded.	N/A	N/A
	High Risk Gullies - House and Road Flooding emptied if possible flooding likely	N/A	N/A
	Other gullies prioritised to resources	Approach WC with areas requiring emptying (we would us Sewer Service)	£65 per hour, providing no extra TM.

Rural Verge Cutting

Maintenance Item	Service Standard	PC Option	Estimated Cost
Rural Grass Cutting	Rural verges cut one per year	Identify areas not to be cut Approach WC before 1st March with areas to be added, but would be required to fund	Nil Circa £30per hour. Minimum 8hrs including travelling

Amenity Soft Maintenance

- Grass – Once per month (Growing Season)
- Shrubs and Hedges – Risk Based annual cutting

Maintenance Item	Service Standard	PC Option	Estimated Cost
Grounds Maintenance	Amenity Hedge Once Per Annum	Go direct to TLG to top up	Dependant on frequency and area
	Amenity Shrub Maintenance Once Per Annum	Go direct to TLG to top up	Dependant on frequency and area
Soft Maintenance	See Map	Go direct to TLG to top up	Dependant on frequency and area

- <http://www.realitygeo.com/explorer.aspx?cfg=wiltsgq>

Masonry Gangs & Pot Hole Gangs

- All works for the gangs will be prioritised according to the council's highway inspection manual.
- Only requests meeting the inspection manual criteria will be undertaken.
- **All works must be reported through the MyWiltshire system (Wiltshire's Web Site, Wiltshire Contact Centre or Mobile App).**
- All works reported will be inspected against the inspection manual to ensure only appropriate works are undertaken.

Tractor Drivers/Operations

- There are six tractors available for the whole county.
- Ringway will schedule the tractor operations.
- Work priorities are identified by the highway office.
- **All works must be reported through the MyWiltshire system (Wiltshire's Web Site, Wiltshire Contact Centre or Mobile App).**
- All works reported will be considered against other tractor priorities to ensure only appropriate works are undertaken.



Maintenance Item	Service Standard	PC Option	Estimated Cost
Grips and tractor other services	Identified grips etc. by WC annually	Approach WC before 1st March with areas to be added for work, but would be required to fund if not a priority for the scheduled service	Circa £30per hour. Minimum 8hrs including travelling
	Identified grips etc. by PC with PS Scheme	Prioritise grip s etc. on PS Visit	Nil

Litter Collection

- All works for the gangs will be prioritised according to the statutory Code of Practice For Litter and Refuse.
- Only requests meeting the criteria will be undertaken.
- **All works must be reported through the MyWiltshire system (Wiltshire's Web Site, Wiltshire Contact Centre or Mobile App).**
- All works reported will be inspected against the CoPLAR criteria to ensure only appropriate works are undertaken.

Maintenance Item	Service Standard	PC Option	Estimated Cost
Litter	CoPLR	Nil	Nil
	No scheduled service	Go direct to TLG	Dependant on frequency and area
	Voluntary Groups	Through PC	Nil

Weed Control

- Two weeds sprays in identified town areas undertaken
- All other areas through PS Scheme

Maintenance Item	Service Standard	PC Option	Estimated Cost
Path Weed Spraying	Amesbury Centre	In Centre twice per year	N/A
	Identified weed control by PC with PS Scheme	Prioritise weed spraying on PS Visit	Nil
	No other service	Go direct to TLG	Dependant on frequency and area

Lines and Signs

- Small budget per annum
(Undertaken through MyWiltshire)
- Funded by PCs through CATGs



Wiltshire Council
Where everybody matters

Examples of current local providers

- Salisbury BID – Road and street sweeping, pressure washing pavements and litter collection.
- McDonalds – provision of litter bins
- Melksham TC – Funding additional grass cutting
- Salisbury CC – Transfer of all streetscene functions
- Numerous schemes through the CATGs

Wiltshire Council
Where everybody matters

1. Please can you tell the council when it is now intended to resurface Bulford Droveaway. The surface is now so poor that vehicles are being driven purposely along the centre of the road to avoid the potholes and indentations.

- This was scheduled to be undertaken in 2016/ 17, but due to having to prioritise other works was removed from the schedule.
- This work is currently being considered for 2017/ 18.

2. There are a number of missing or damaged road signs in the village including speed limitation. These have been reported through the My Wiltshire app, but no action has been forthcoming. When will this be addressed?

Photo	Service request #	Category	Submit time	Close time	Status	Incident location	Street name	Area	Parish	Urgency	Owner
1	794986	Council furniture/signs	08/09/2016 16:14	13/09/2016 14:28	Complete	Bourne House, Tanners Lane, Shrewton, Wiltshire SP3 4JT	Tanners Lane	Amesbury	Shrewton CP	-	Highways Resolved
2	791084	Council furniture/signs	08/09/2016 12:41	08/09/2016 14:17	Monitor	El Tucuche, Elston Lane, Shrewton, Wiltshire. SP3 4HQ	Elston Lane	Amesbury	Orcheston CP	-	Michael Hocking Barrier
3	766781	Council furniture/signs	17/08/2016 15:04	-	Instructed	The Hollow, Shrewton, Salisbury SP3, UK	The Hollow	Amesbury	Orcheston CP	-	Ringway Supervisor Barrier South
4	752436	Council furniture/signs	05/08/2016 20:13	23/08/2016 09:08	Complete	Elston Stud, Elston, Shrewton, Salisbury SP3 4HQ, UK	-	Amesbury	Shrewton CP	-	Mr. Andy Cole
5	736696	Council furniture/signs	25/07/2016 11:01	18/08/2016 07:36	Complete	35 Meadway, Shrewton, Salisbury SP3 4HE, UK	Meadway	Amesbury	Shrewton CP	-	Highways South
6	623433	Council furniture/signs	18/04/2016 14:13	20/05/2016 13:01	Closed	Maddington St, Shrewton Salisbury, Wiltshire SP3 4JN, UK	Maddington Street	Amesbury	Shrewton CP	-	Mr. Nicholas Bancroft
7	622966	Council furniture/signs	18/04/2016 11:33	20/05/2016 12:58	Closed	Charcroft, Maddington Street, Shrewton, Wiltshire, SP3 4JL, The Hollow, Shrewton, Salisbury, Wiltshire SP3, UK	Maddington Street	Amesbury	Shrewton CP	-	Mr. Nicholas Bancroft
8	465135	Council furniture/signs	07/12/2015 14:38	10/12/2015 16:56	Closed	The Hollow, Shrewton, Salisbury, Wiltshire SP3, UK	The Hollow	Amesbury	Shrewton CP	-	Mr. Craig Campbell

3. There are two stretches of broken highway barrier on the A338 through the village of Cholderton and these are clearly unsightly and by their absence increase the risk of a serious incident - if not, why are they there in the first place.

- No insurance claim is possible as the vehicle details were not captured.
- If a local priority the Parish may choose to fund the replacement, as regrettably these works are unfunded. However, the council will ensure the area is maintained in a safe condition. If the council deems barriers are not need, then replacement barriers will not be provided as in this case.



Wiltshire Council
Where everybody matters

Shrewton was informed that the High Street would be resurfaced in 2016 but this has now fallen by the wayside. The High Street is in a very poor state of repair, especially by the Church, which makes it hazardous for cyclists. When is this work going to be done?"

- The local highway office has not scheduled any major resurfacing work for the High Street in the last two years, and has not identified any works for the forth coming financial year.
- Highways will continue to inspect the area to ensure it is maintained in a usable condition (as per the Highways Inspection Manual).

Wiltshire Council
Where everybody matters

Questions

This page is intentionally left blank

Completed Highways Major Maintenance 2014 to 2016 – Amesbury Area Board

Road	Location	Treatment
A338	Tidworth Road, bend near Birdlime Farm, Porton	Skid Resistance Improvement
B390	Chitterne Road, near Maddington Farm	Skid Resistance Improvement
U/C	The Packway, east of Rollestone Crossroads	Skid Resistance Improvement
B3083	North of A303 High Street, Winterbourne Stoke	Skid Resistance Improvement
B390	Chitterne Road, Middle Croft Farm, Shrewton	Skid Resistance Improvement
B3083	North of A303 High Street, Winterbourne Stoke	Skid Resistance Improvement
C32	Solstice Park Avenue, Porton Road roundabout east to next roundabout	Skid Resistance Improvement
C32	Roundabout 1 Solstice Park, Amesbury	Skid Resistance Improvement
U/C	Candown Road, Tilshead	Surfacing
U/C	Church Street, Wyllye	Surfacing
U/C	Elston Lane, Shrewton	Surfacing
U/C	Imber Place, Tilshead	Surfacing
A338	A338 through The Winterbournes to Gomeldon	Surfacing and repairs

Road	Location	Treatment
	Roundabout	
A360	Shrewton Junction	Surfacing
U/C	Bulford Road, Bulford	Resurfacing
U/C	John French Way/ Dukes Way, Bulford	Resurfacing, with footway reconstruction
U/C	Dorset Close, Bulford	Resurfacing, with footway reconstruction
U/C	Avondown Rd/Glendale Rd, Durrington	Resurfacing and footways
U/C	Meadow Road, Bulford	Resurfacing and footways
A345	A345, Crossroads at Highpost	Resurfacing
B390	Chitterne Road, Shrewton	Carriageway Repairs
A338	North of Allington to past Newton Tony access roads	Resurfacing
A360	East of Shrewton Speed limit to top of hill	Resurfacing
A360	East of Shrewton From patch to Stonehenge RNBT	Surface dressing
U/C	Winterslow Road, Porton	Carriageway resurfacing
U/C	Longfield Close, Durrington	Carriageway resurfacing
U/C	Marina Drive, Durrington	Carriageway resurfacing

Road	Location	Treatment
C49	Orchard Close, Porton	Surfacing
A4015/B3083	Amesbury Road/ Salisbury Road, Shrewton	Surfacing
U/C	The Packway, Larkhill	Surfacing

This page is intentionally left blank

Proposed Highways Major Maintenance 2016/17 – Amesbury Area Board

Road	Location	Recommended Treatment	Estimated Length (m)
U/C	Junction with A303 north into The Common to junction with Maddington Street	Surface Dressing	6,566
A360	Amesbury Road Shrewton east to Airmans Corner	Surface Dressing	3,808
A360	Shrewton to Tilshead	Surface Dressing	TBC
B3086	High Street/London Road Shrewton into The Packway to Rollestone Crossroads	Surface Dressing	3,440
B3086	B3086 Airmans Corner north to Rollestone Crossroads	Surface Dressing	1,782
B3083	North of A303 High Street, Winterbourne Stoke	Skid Resistance Improvement	120
B390	Chitterne Road, Middle Croft Farm, Shrewton	Skid Resistance Improvement	110
B3083	North of A303 High Street, Winterbourne Stoke	Skid Resistance Improvement	120
C42	Lower Woodford Blue	Surface Dressing	TBC
C293	Allington	Surface Dressing	TBC
C32	Milston Road Junction, Bulford	Surface Dressing	TBC

This page is intentionally left blank